

WASBO Conference

Public School-Operated Child Care

May 12, 2023

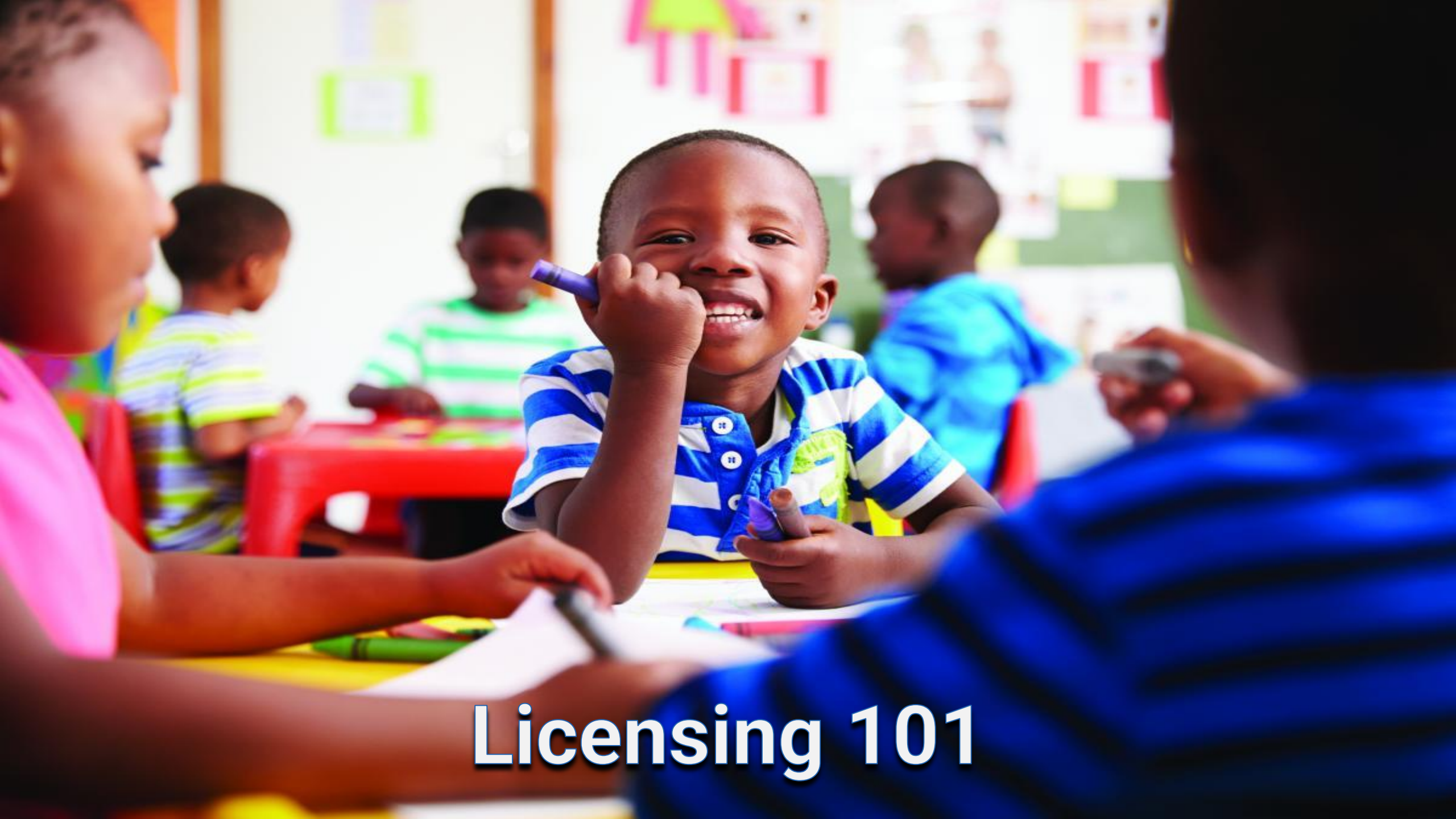


Wisconsin Department of
Children and Families

Agenda

- Introductions
- Licensing 101
- Public School-Operated Child Care
- How to Get Licensed
- Q & A





Licensing 101

Child Care in Wisconsin

- DCF has statutory authority, delegated to BECR, to regulate child care programs under [Chapter 48, Wis. Stats.](#)
- Divided regionally
 - Northeastern (Green Bay)
 - Northern (Rhineland)
 - Southeastern (Waukesha)
 - Southern (Madison)
 - Western (Eau Claire)



Legally Operating Unregulated Child Care
3 or less children under age 7

Children not related to
provider

Provisional Certification (Level II)
3 or less children under the age of 7 (max group 6)

Voluntary, administered by
local agencies and BECR
in Milwaukee

Regular Certification (Level I)
3 or less children under age 7 (max group 6)

Licensed Family
4 or more children (max group 8)

Administered by DCF

Group Center Care



Administered by DCF

Licensed Group

9 or more children

Day Camps



Licensed Camp

4 or more children ages 3 and older

Public School-Operated Programs

- To ensure health and safety of the children of Wisconsin "All child care programs operated or contracted by a **public school** that wish to be eligible to receive Wisconsin Shares and participate in YoungStar **must be monitored annually** for compliance."
 - S. 120.13 (14), Wis. Stats. States that these programs must meet standards of DCF 251
 - Unannounced monitoring visits and complaint visits
- Programs operated by school district vs. programs that rent space from school district



YoungStar QRIS

- [Bureau of YoungStar](#)
 - Wisconsin's Quality Rating and Improvement System (QRIS)
 - Star rating system – 1 Star to 5 Star
 - Promotes access to high quality care for our most vulnerable populations
 - Can enroll children with Wisconsin Shares subsidies
 - Supports providers with tools and resources to deliver high quality care
 - Assigned consultant and technical assistance
 - [Video on what is YoungStar](#)



We Partner with Head Start and Early Head Start

- Federal program for children under the age of 5 from low-income families
 - No cost to eligible families, funded through grants
- Administered through the [Office of Head Start](#), United States Department of Health and Human Services
 - Manages grant funding and oversees local (state) agencies
- Head Start and Early Head Start programs are required to participate in their state's QRIS (YoungStar)





Why get licensed?

Child Care Counts



- Stabilization is a monthly payment program that supports Wisconsin's early care and education community.
 - Program A – increasing access to high-quality care
 - Operating expenses, purchasing materials and supplies to enhance program environment and curriculum, professional development, etc.
 - Program B – funding workforce recruitment and retention
 - Maintain existing compensation, bonuses, benefits, recruiting, etc.
 - Payments determined by capacity (per-child amount in Program A), staff (per-staff amount in Program B) and YoungStar participation
- Website link <https://dcf.wisconsin.gov/covid-19/childcare/payments>



Project Growth

- Helping Wisconsin business, communities, and ECE partners add services, find solutions, and innovate
- Partner Up!
 - Supports partnerships between business and local child care programs
- Dream Up!
 - Supports innovative strategic planning for child care in local communities
- Cohort awardees are available to view
 - [Partner Up! Awardees](#)
 - [Dream Up! Awardees](#)



**PROJECT
GROWTH**



Early Childhood Health Consultation

- Partnership with UW – Madison School of Human Ecology (SoHE)
- Provides information, guidance and advice on health and well-being issues in early childhood settings
- Resources provided include: research, training, webinars, podcasts, individual consultation
- Participating Counties and Tribes: Adams, Ashland, Clark, Crawford, Door, Florence, Iowa, La Courte Oreilles Tribe, Lafayette, Langlade, Menominee, Pepin, Price, Richland, Rock, Sauk, Vernon, Washburn

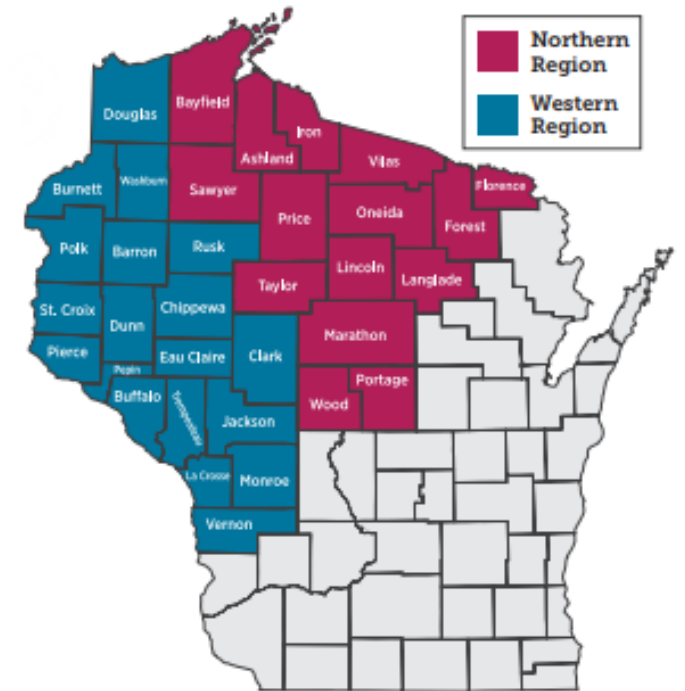


Data Reference: Wisconsin Department of Children & Families, 1/17/2



Provider Assistance for Licensing (PAL)

- This program was developed to support families with child care needs in areas with limited to no child care options
- Grant program to [assist unregulated child care providers in becoming regulated](#), focused on the Western and Northern licensing regions
- Program goals
 - Increase the number of licensed child care centers in the Northern and Western licensing regions
 - Support prospective or newly licensed child care providers' start-up and long-term sustainability and connect them to services available





How do we get licensed?

Licensing Process for Public Schools

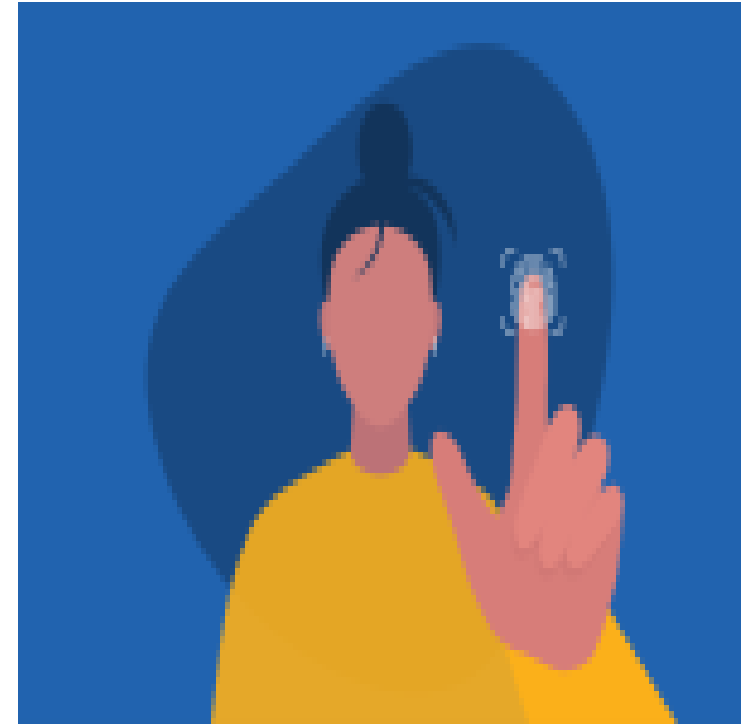


- School district must apply to be monitored by the Department of Children and Families and submit to the applicable [Regional Licensing office](#)
 - DCF-F-5155 Information Required to Monitor Public School Operated Child Care Programs
 - Copy of IRS W-9
 - YoungStar contract form
- A licensing specialist will reach out to the program to set up an announced visit to review rules and inspect the premises
 - Opportunity to meet assigned licensing specialist, ask questions, and learn more about the monitoring process and licensing rules



Licensing Resources

- [Public Schools Offering Child Care Services](#)
 - Information on how to become a regulated program
- [Regulated Programs – Frequently Asked Questions](#)
- [Regional Licensing Contacts](#)
- [DCF 251 Licensing Rules for Group Child Care Centers](#)



Questions?





Contact

Amanda St. Martin, MSW

Child Care Licensing Program Specialist

amanda.stmartin@wisconsin.gov

(608) 422-6732

