

From Teaching to Tornadoes

Panel Discussion on How
School Districts Handled
the October 12, 2022
Tornadoes



Panelists

- Andy Wegner



- John Stangler



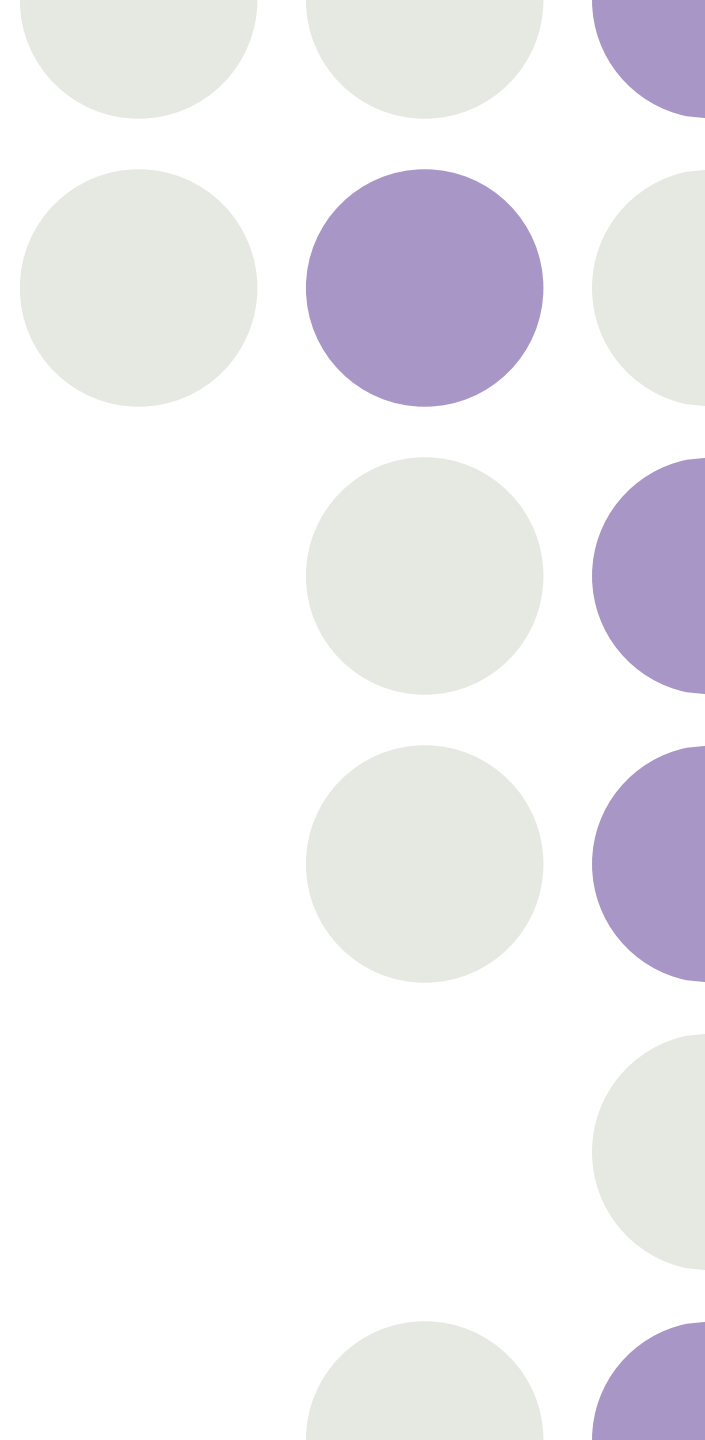
- Tim Gorecki



- Greg Maroo

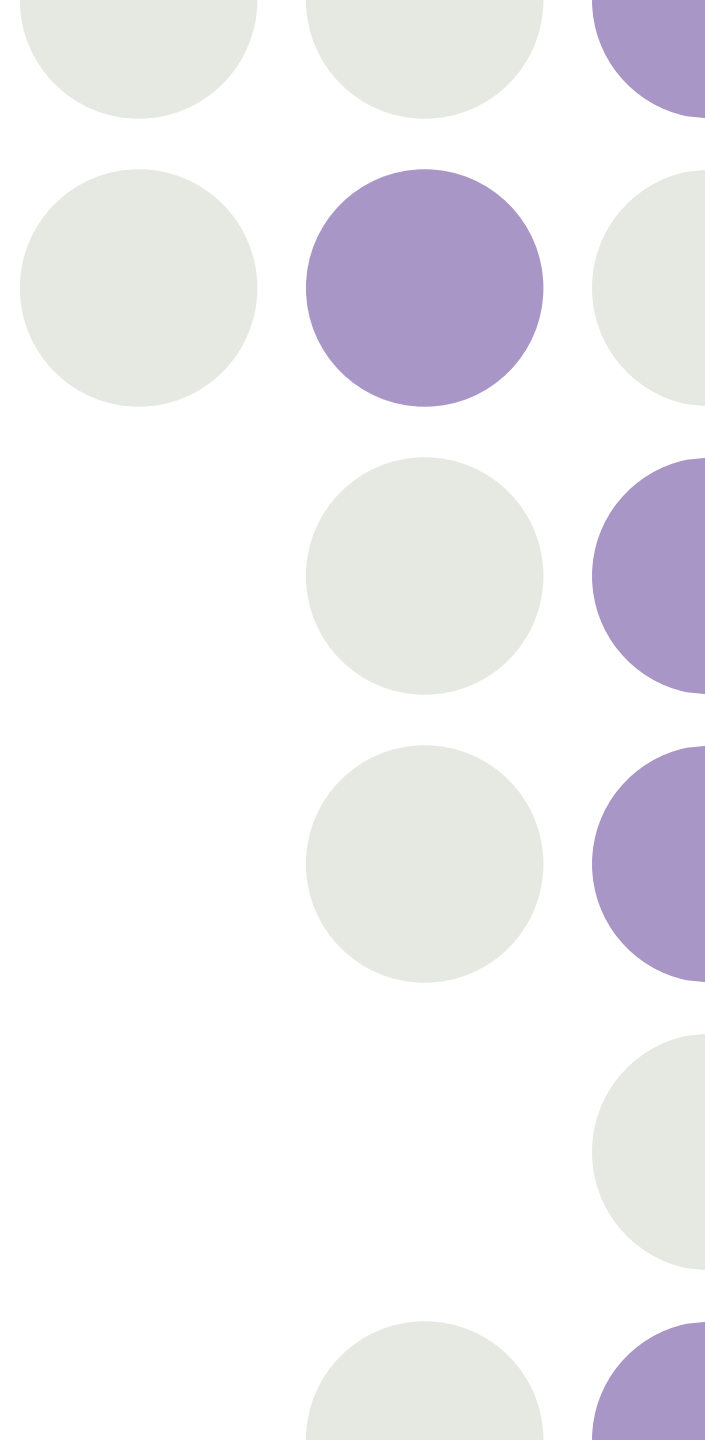


- Mark McGinnis



Today's Goals:

- Severe weather, ***not forecast***, in the form of tornados hit southeastern Wisconsin late morning and early afternoon of October 12, 2022
 - Hear from four StormReady school districts in Waukesha County on how they handled the rapidly changing circumstances
 - The wins, struggles, failures and lessons learned
-



Background: October 11, 2022

WIZ065-120900-

Waukesha-

Including the cities of Waukesha, Brookfield, New Berlin,
Menomonee Falls, and Muskego

931 PM CDT Tue Oct 11 2022

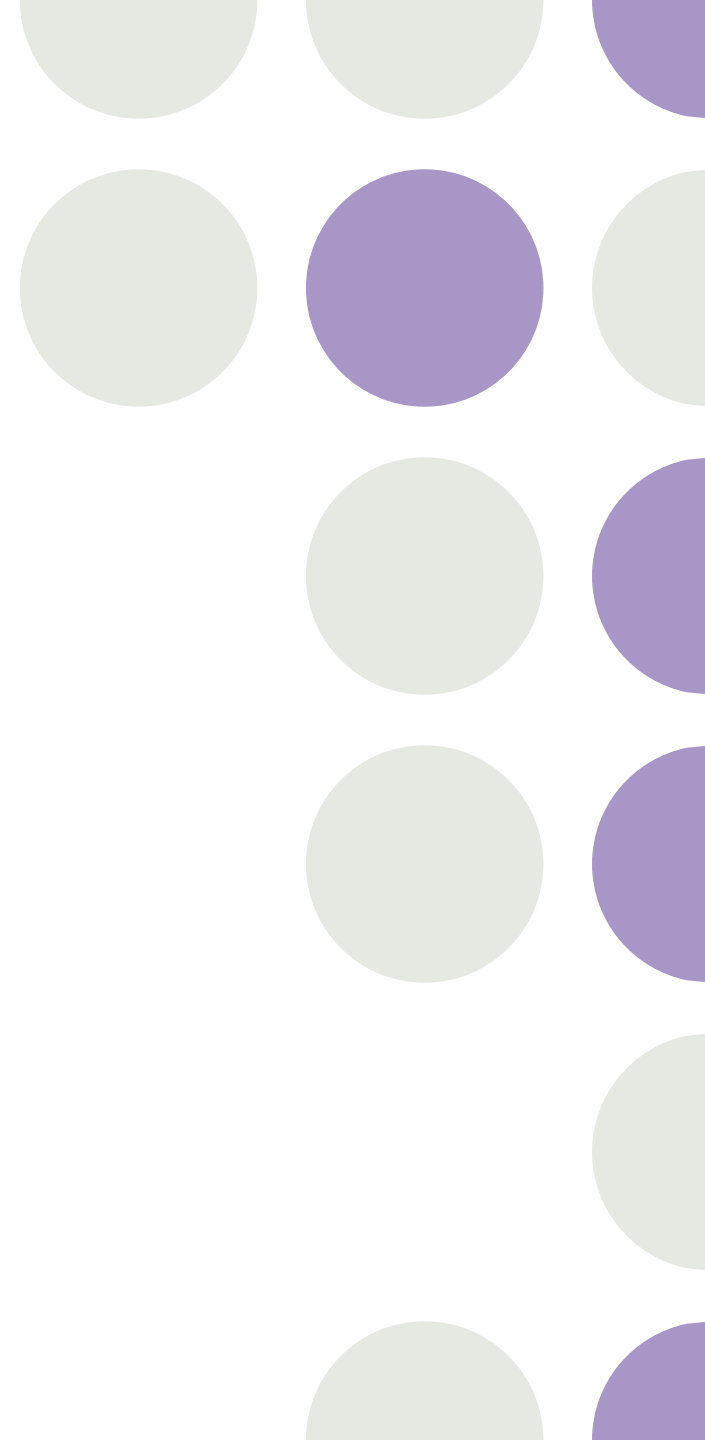
.TONIGHT...Warmer. Light rain showers likely and chance of thunderstorms. Near steady temperature around 60. South winds 15 to 20 mph with gusts to around 35 mph. Chance of precipitation 70 percent.

.WEDNESDAY...Cloudy then becoming partly sunny early in the afternoon then becoming sunny. Light rain showers in the morning. Chance of thunderstorms until late afternoon. Chance of light rain showers in the afternoon. Highs in the lower 60s. Southwest winds 10 to 20 mph. Chance of precipitation 80 percent.



Panel Questions:

- At your district, what conversations do you have internally on days with thunderstorms?
 - Is the risk of thunderstorms enough of a threshold to have internal discussions?
 - If so, what proactive measures do you take?
-



Background: October 11, 2022

772

FLUS43 KMKX 120248
HWOMKX

Hazardous Weather Outlook
National Weather Service Milwaukee/Sullivan WI
948 PM CDT Tue Oct 11 2022

WIZ046-047-051-052-056>060-062>072-130300-
Marquette-Green Lake-Fond du Lac-Sheboygan-Sauk-Columbia-Dodge-
Washington-Ozaukee-Iowa-Dane-Jefferson-Waukesha-Milwaukee-
Lafayette-Green-Rock-Walworth-Racine-Kenosha-
948 PM CDT Tue Oct 11 2022

This Hazardous Weather Outlook is for portions of east central Wisconsin, south central Wisconsin and southeast Wisconsin.

.DAY ONE...Tonight

There is a chance for a few thunderstorms at times especially late tonight. A few storms could have strong, gusty winds and small hail.

.DAYS TWO THROUGH SEVEN...Wednesday through Tuesday

Thunderstorm chances will continue through Wednesday morning.

Frost is possible at times each night and early morning late in the week and into the weekend.

.SPOTTER INFORMATION STATEMENT...

Spotter activation will not be needed.



Background: October 12, 2022

WIZ065-122100-

Waukesha-

Including the cities of Waukesha, Brookfield, New Berlin,
Menomonee Falls, and Muskego

931 AM CDT Wed Oct 12 2022

.REST OF TODAY...Cooler. Becoming sunny late in the afternoon.
Rain showers and chance of thunderstorms in the late morning and
early afternoon. Highs in the lower 60s. West winds 10 to 20 mph.
Chance of precipitation 90 percent.

.TONIGHT...Colder. Partly cloudy. A 30 percent chance of light
rain showers through around midnight. Lows in the upper 30s. West
winds 5 to 15 mph.

.THURSDAY...Cooler. Mostly sunny in the morning then becoming
partly sunny. A 20 percent chance of light rain showers in the
late morning and afternoon. Highs in the upper 40s. West winds
10 to 20 mph.

.THURSDAY NIGHT...Partly cloudy. A 20 percent chance of light
rain showers through around midnight. Widespread frost after
midnight. Lows in the lower 30s. West winds 5 to 10 mph.

.FRIDAY...Partly sunny. Widespread frost in the morning. Highs
around 50. West winds 5 to 15 mph.

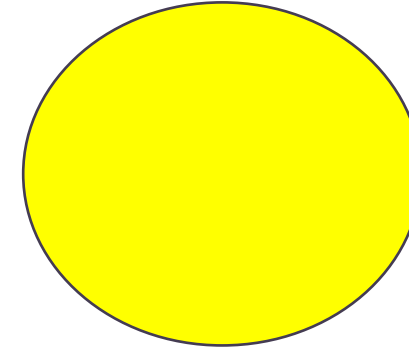
.FRIDAY NIGHT...Mostly cloudy with a 20 percent chance of light
rain showers. Lows in the mid 30s.

.SATURDAY...Partly sunny. Areas of frost in the morning. Highs
around 50.

.SATURDAY NIGHT...Mostly clear. Widespread frost through the
night. Lows in the lower 30s.

.SUNDAY...Partly sunny. Widespread frost in the morning. Highs in
the lower 50s.

.SUNDAY NIGHT...Partly cloudy. Slight chance of light rain
showers through around midnight, then slight chance of light rain
showers, freezing rain and snow showers after midnight. Lows in
the lower 30s. Chance of precipitation 20 percent.



9:31am

Two Hours Later on October 12, 2022

BULLETIN - EAS ACTIVATION REQUESTED

Tornado Warning
National Weather Service Milwaukee/Sullivan WI
1127 AM CDT Wed Oct 12 2022

The National Weather Service in Milwaukee/Sullivan has issued a

* Tornado Warning for...
Southwestern Waukesha County in southeastern Wisconsin...
Northeastern Jefferson County in southeastern Wisconsin...

* Until noon CDT.

* At 1127 AM CDT, a severe thunderstorm capable of producing a
tornado was located near Johnson Creek, or near Jefferson, moving
southeast at 35 mph.

HAZARD...Tornado.

SOURCE...Radar indicated rotation.

IMPACT...Flying debris will be dangerous to those caught without
shelter. Mobile homes will be damaged or destroyed.
Damage to roofs, windows, and vehicles will occur. Tree
damage is likely.

* Locations impacted include...
Ottawa, Johnson Creek, Dousman, Rome, Eagle, Waterville, Sullivan,
Helenville, Summit and Nws Milwaukee/sullivan.

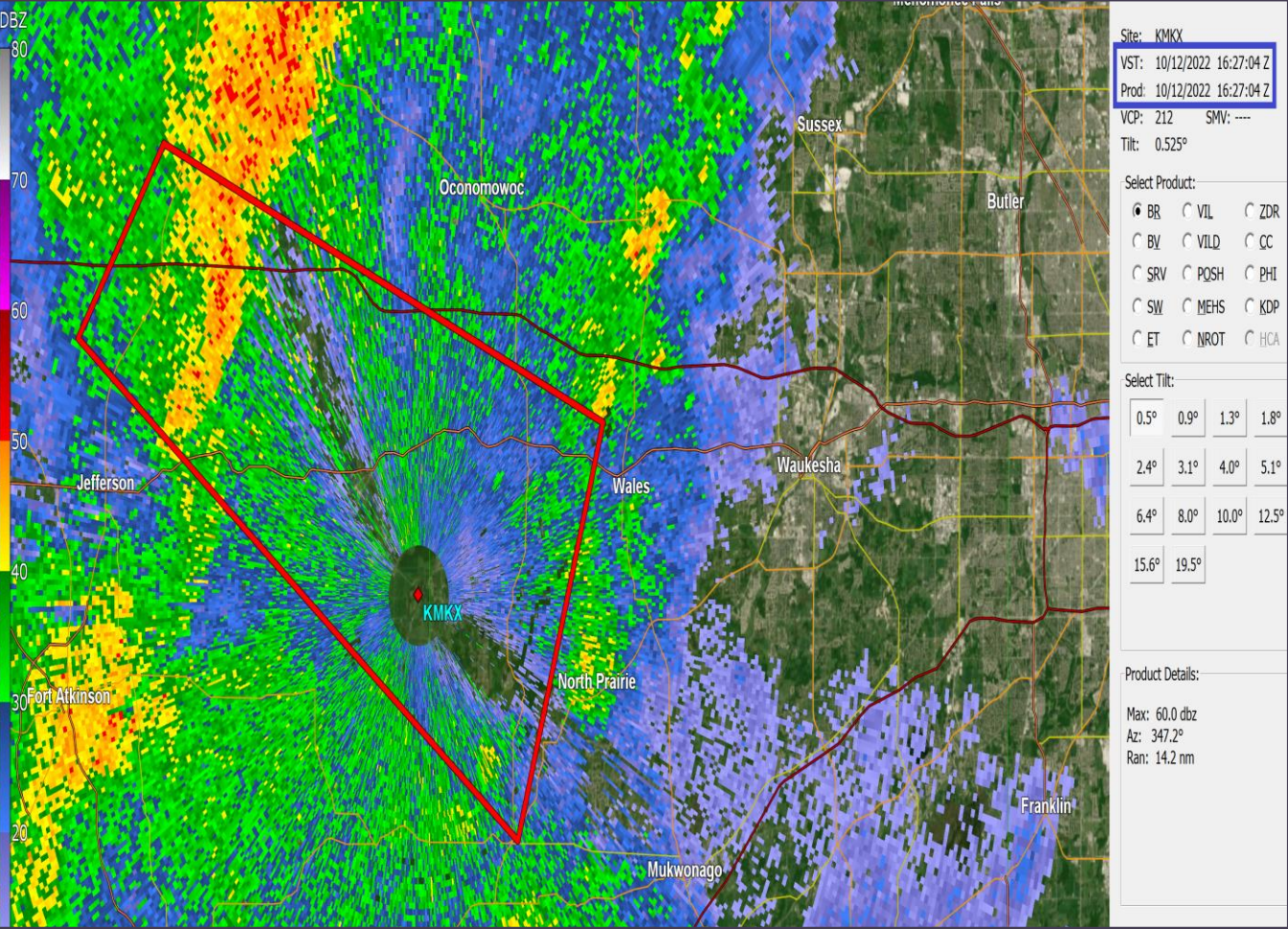
PRECAUTIONARY/PREPAREDNESS ACTIONS...

TAKE COVER NOW! Move to a basement or an interior room on the lowest
floor of a sturdy building. Avoid windows. If you are outdoors, in a
mobile home, or in a vehicle, move to the closest substantial shelter
and protect yourself from flying debris.



11:27 am

October 12, 2022



11:27 am

Panel Questions:

- At 11:27am, parts of Oconomowoc and Mukwonago school districts are under a tornado warning
 - Andy and Greg, did you have initial challenges (these were the first warnings of the day)?
-

11:27am



October 12, 2022

BULLETIN - EAS ACTIVATION REQUESTED

Tornado Warning
National Weather Service Milwaukee/Sullivan WI
1131 AM CDT Wed Oct 12 2022

The National Weather Service in Milwaukee/Sullivan has issued a

* Tornado Warning for...

Northwestern Waukesha County in southeastern Wisconsin...
Northeastern Jefferson County in southeastern Wisconsin...

* Until noon CDT.

* At 1131 AM CDT, a severe thunderstorm capable of producing a tornado was located near Lac La Belle, or 7 miles west of Okauchee Lake, moving east at 35 mph.

HAZARD...Tornado.

SOURCE...Radar indicated rotation.

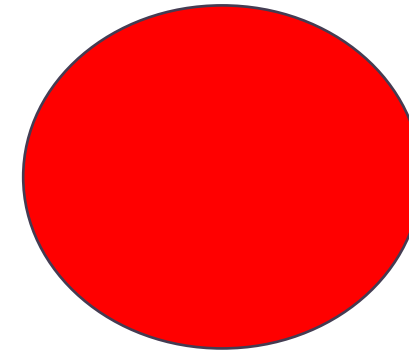
IMPACT...Flying debris will be dangerous to those caught without shelter. Mobile homes will be damaged or destroyed. Damage to roofs, windows, and vehicles will occur. Tree damage is likely.

* Locations impacted include...

Hartland, Delafield, Okauchee Lake, Oconomowoc, Merton, Lac La Belle, Ixonia, Nashotah, Oconomowoc Lake, Chenequa, Stone Bank, Summit, North Lake, Pipersville, Lapham Peak St Park, Monterey and Lake Lac La Belle.

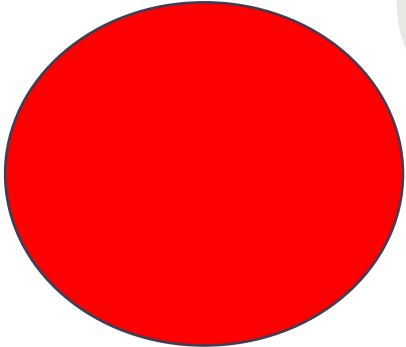
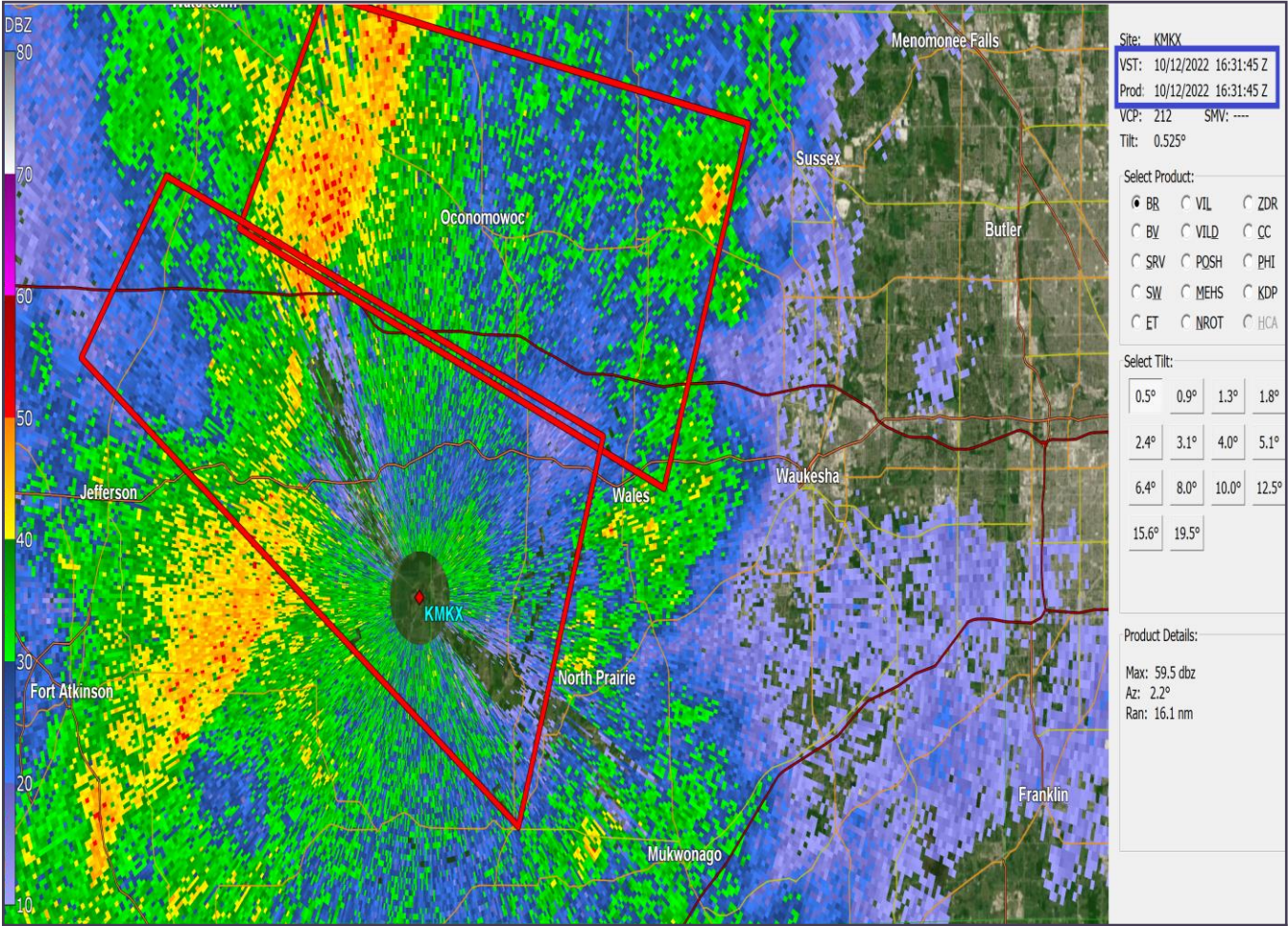
PRECAUTIONARY/PREPAREDNESS ACTIONS...

TAKE COVER NOW! Move to a basement or an interior room on the lowest floor of a sturdy building. Avoid windows. If you are outdoors, in a mobile home, or in a vehicle, move to the closest substantial shelter and protect yourself from flying debris.



11:31am

October 12, 2022



11:31am



Panel Questions:

- At 11:31am, all of Oconomowoc and Pewaukee School Districts are under a tornado warning.
 - John and Greg, how quickly did word get out across your campuses?
 - Were there any delayed responses/ complications?
-

11:31am



October 12, 2022

BULLETIN - EAS ACTIVATION REQUESTED

Tornado Warning
National Weather Service Milwaukee/Sullivan WI
1146 AM CDT Wed Oct 12 2022

The National Weather Service in Milwaukee/Sullivan has issued a

* Tornado Warning for...
Walworth County in southeastern Wisconsin...
East central Rock County in south central Wisconsin...
Southwestern Waukesha County in southeastern Wisconsin...
Southeastern Jefferson County in southeastern Wisconsin...

* Until 1215 PM CDT.

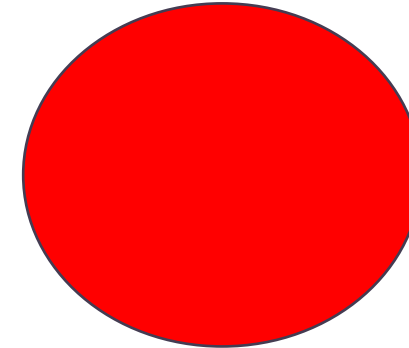
* At 1146 AM CDT, a severe thunderstorm capable of producing a tornado was located near Whitewater, moving southeast at 40 mph.

HAZARD...Tornado.

SOURCE...Radar indicated rotation.

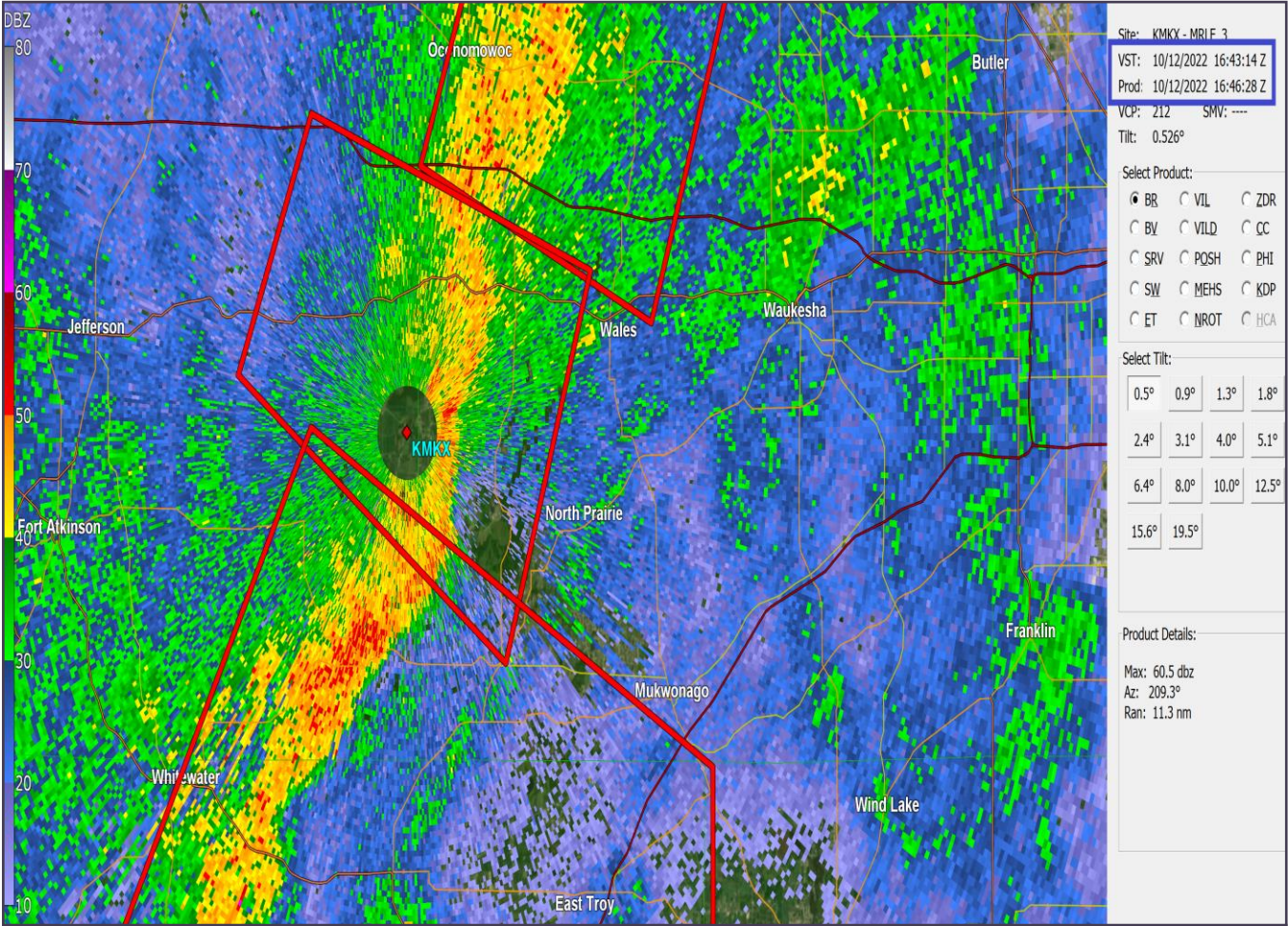
IMPACT...Flying debris will be dangerous to those caught without shelter. Mobile homes will be damaged or destroyed. Damage to roofs, windows, and vehicles will occur. Tree damage is likely.

* Locations impacted include...
Whitewater, Elkhorn, Delavan, Lake Geneva, Mukwonago, East Troy, Palmyra, Como, Pell Lake, Potter Lake, Powers Lake, Burlington, Richmond, Springfield, La Grange, Eagle, Honey Creek, Abells Corners, Tibbets and Millard.



11:46am

October 12, 2022



11:46am

October 12, 2022

BULLETIN - EAS ACTIVATION REQUESTED

Tornado Warning
National Weather Service Milwaukee/Sullivan WI
1152 AM CDT Wed Oct 12 2022

The National Weather Service in Milwaukee/Sullivan has issued a

* Tornado Warning for...
Waukesha County in southeastern Wisconsin...
North central Kenosha County in southeastern Wisconsin..

* Until 1215 PM CDT.

* At 1152 AM CDT, severe thunderstorms capable of producing a tornado were located along a line extending from near Lisbon to near Palmyra, moving east at 45 mph.

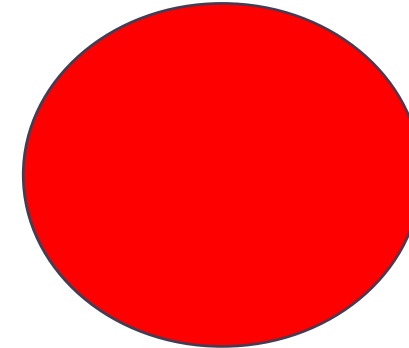
HAZARD...Tornado.

SOURCE...Radar indicated rotation.

IMPACT...Flying debris will be dangerous to those caught without shelter. Mobile homes will be damaged or destroyed. Damage to roofs, windows, and vehicles will occur. Tree damage is likely.

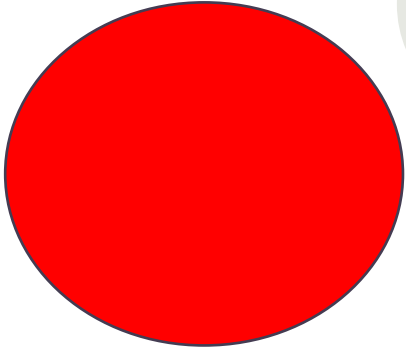
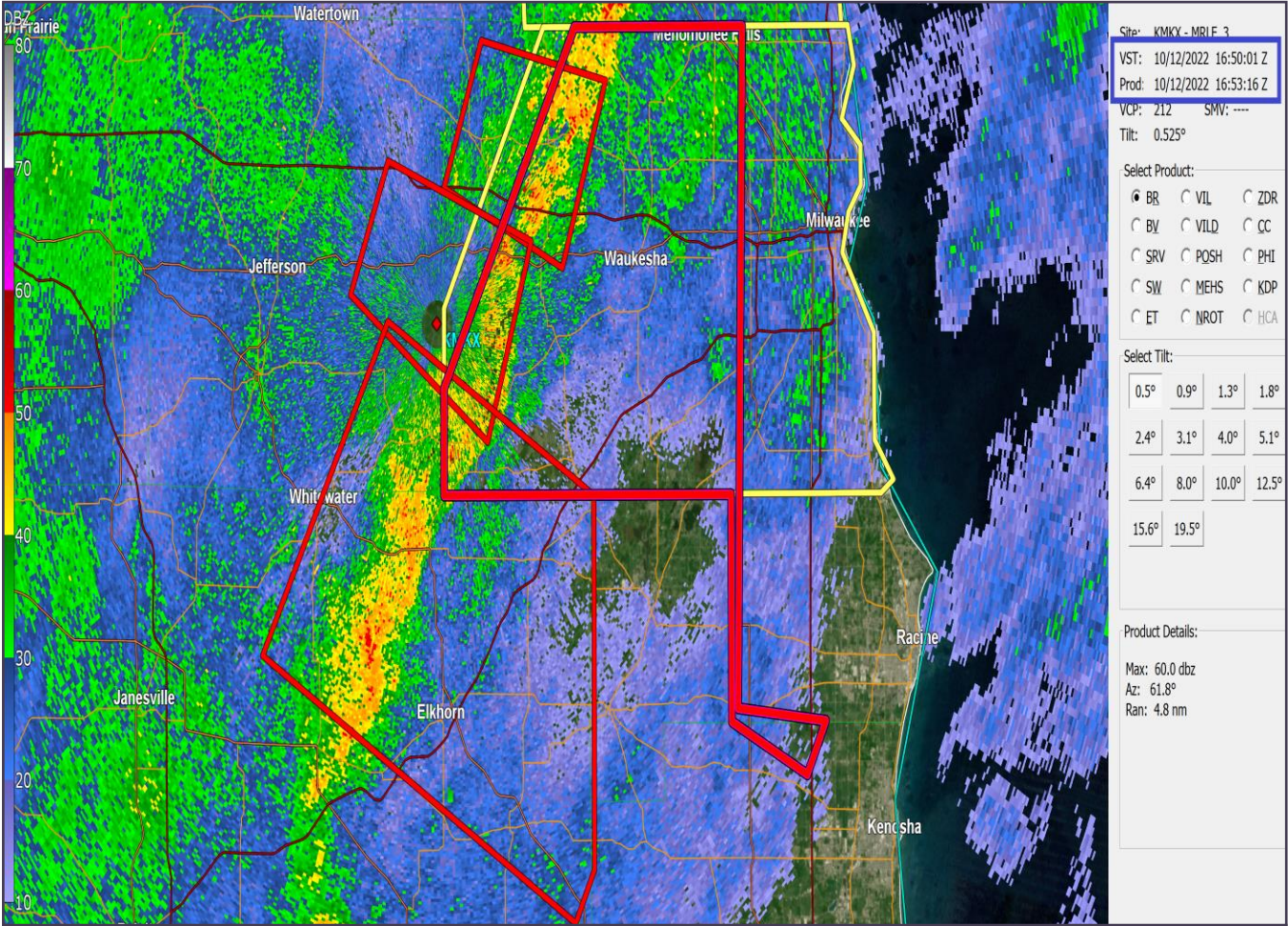
* Locations impacted include...
Waukesha, Wauwatosa, New Berlin, Brookfield, Menomonee Falls, Muskego, Pewaukee, Sussex, Hartland, Hales Corners, Mukwonago, Delafield, Elm Grove, Union Grove, Wales, Lisbon, Vernon, Ottawa, Merton and Dousman.

People attending Wambold Dam Construction should seek safe shelter immediately!



11:52am

October 12, 2022



11:53am

Panel Questions:

- At 11:52am, all properties in all 4 school districts are now under tornado warnings.
 - Same question for Tim, how quickly did word get out across your campuses?
 - Were there any delayed responses/ complications?
 - Andy, how did Mukwonago handle the transition from part of the district being warned to now all the district being warned?
-

11:53am

October 12, 2022

BULLETIN - EAS ACTIVATION REQUESTED

Tornado Warning
National Weather Service Milwaukee/Sullivan WI
1207 PM CDT Wed Oct 12 2022

The National Weather Service in Milwaukee/Sullivan has issued a

* Tornado Warning for...
Southwestern Ozaukee County in southeastern Wisconsin...

* Until 1230 PM CDT.

* At 1206 PM CDT, a severe thunderstorm capable of producing a
tornado was located over Mequon, moving east at 45 mph.

HAZARD...Tornado.

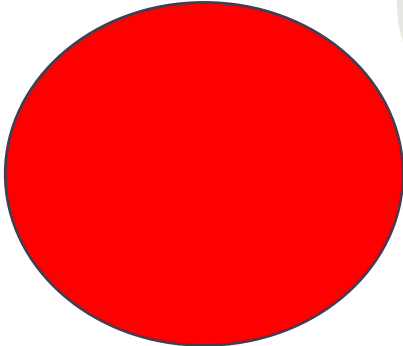
SOURCE...Radar indicated rotation.

IMPACT...Flying debris will be dangerous to those caught without
shelter. Mobile homes will be damaged or destroyed.
Damage to roofs, windows, and vehicles will occur. Tree
damage is likely.

* Locations impacted include...
Mequon, Cedarburg, Bayside and Thiensville.

PRECAUTIONARY/PREPAREDNESS ACTIONS...

TAKE COVER NOW! Move to a basement or an interior room on the lowest
floor of a sturdy building. Avoid windows. If you are outdoors, in a
mobile home, or in a vehicle, move to the closest substantial shelter
and protect yourself from flying debris.



12:07pm

October 12, 2022

BULLETIN - EAS ACTIVATION REQUESTED

Tornado Warning

National Weather Service Milwaukee/Sullivan WI

1210 PM CDT Wed Oct 12 2022

The National Weather Service in Milwaukee/Sullivan has issued a

* Tornado Warning for...

Milwaukee County in southeastern Wisconsin...

* Until 1245 PM CDT.

* At 1209 PM CDT, severe thunderstorms capable of producing a tornado were located along a line extending from near Menomonee Falls to Mukwonago, moving northeast at 35 mph.

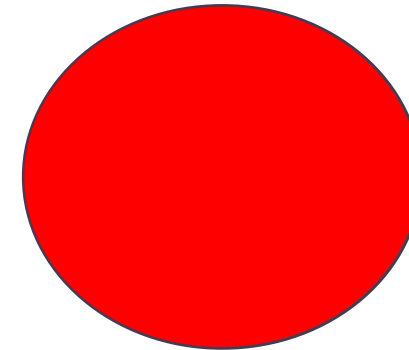
HAZARD...Tornado.

SOURCE...Radar indicated rotation.

IMPACT...Flying debris will be dangerous to those caught without shelter. Mobile homes will be damaged or destroyed. Damage to roofs, windows, and vehicles will occur. Tree damage is likely.

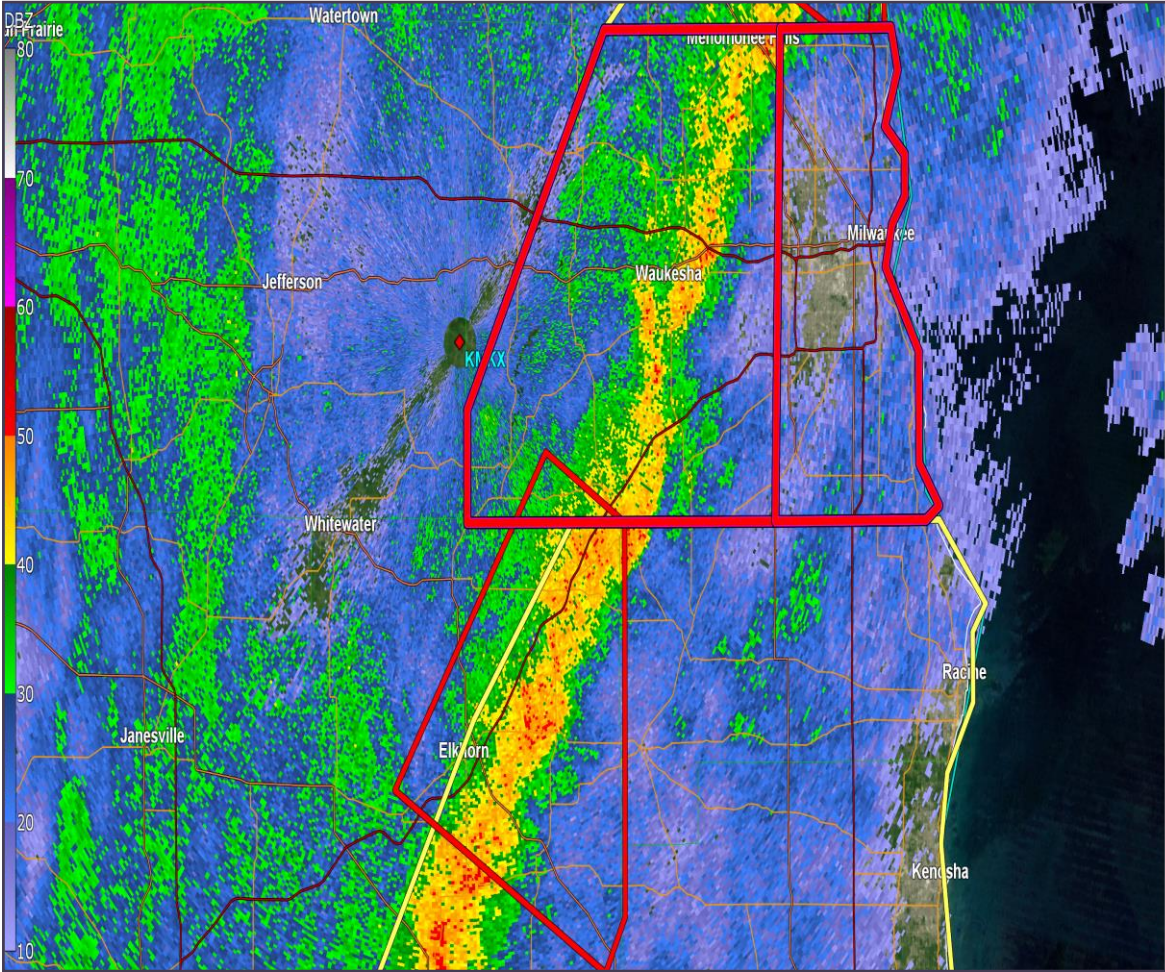
* Locations impacted include...

Milwaukee, West Allis, Wauwatosa, Greenfield, Oak Creek, South Milwaukee, Cudahy, Whitefish Bay, Greendale, Brown Deer, St. Francis, Hales Corners, Fox Point, Bayside, West Milwaukee, Franklin, Glendale, River Hills, Milwaukee Hoan Bridge and Shorewood.



12:10pm

October 12, 2022



Site: KMKX - MRL E 3
VST: 10/12/2022 17:10:25 Z
Prod: 10/12/2022 17:10:25 Z
VCP: 212 SMV: ---
Tilt: 0.526°

Select Product:

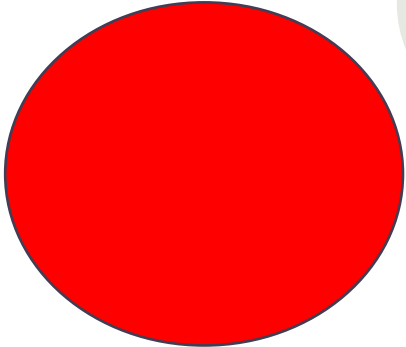
- BR
- VIL
- ZDR
- BV
- VILQ
- CC
- SRV
- PQSH
- PHI
- SW
- MEHS
- KDP
- ET
- NROT
- HCA

Select Tilt:

0.5°	0.9°	1.3°	1.8°
2.4°	3.1°	4.0°	5.1°
6.4°	8.0°	10.0°	12.5°
15.6°	19.5°		

Product Details:

Max: 55.5 dbz
Az: 175.2°
Ran: 21.9 nm



12:10pm



October 12, 2022

BULLETIN - EAS ACTIVATION REQUESTED

Tornado Warning
National Weather Service Milwaukee/Sullivan WI
1213 PM CDT Wed Oct 12 2022

The National Weather Service in Milwaukee/Sullivan has issued a

* Tornado Warning for...
Southeastern Walworth County in southeastern Wisconsin...
Racine County in southeastern Wisconsin...
Southeastern Waukesha County in southeastern Wisconsin...
Kenosha County in southeastern Wisconsin...

* Until 100 PM CDT.

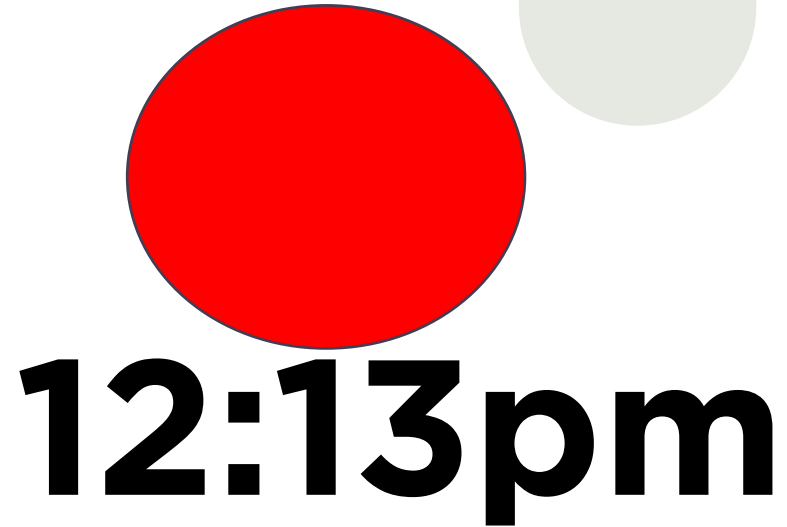
* At 1213 PM CDT, severe thunderstorms capable of producing a tornado were located along a line extending from near Vernon to near Waterford North to near Walworth, moving east at 45 mph.

HAZARD...Tornado.

SOURCE...Radar indicated rotation.

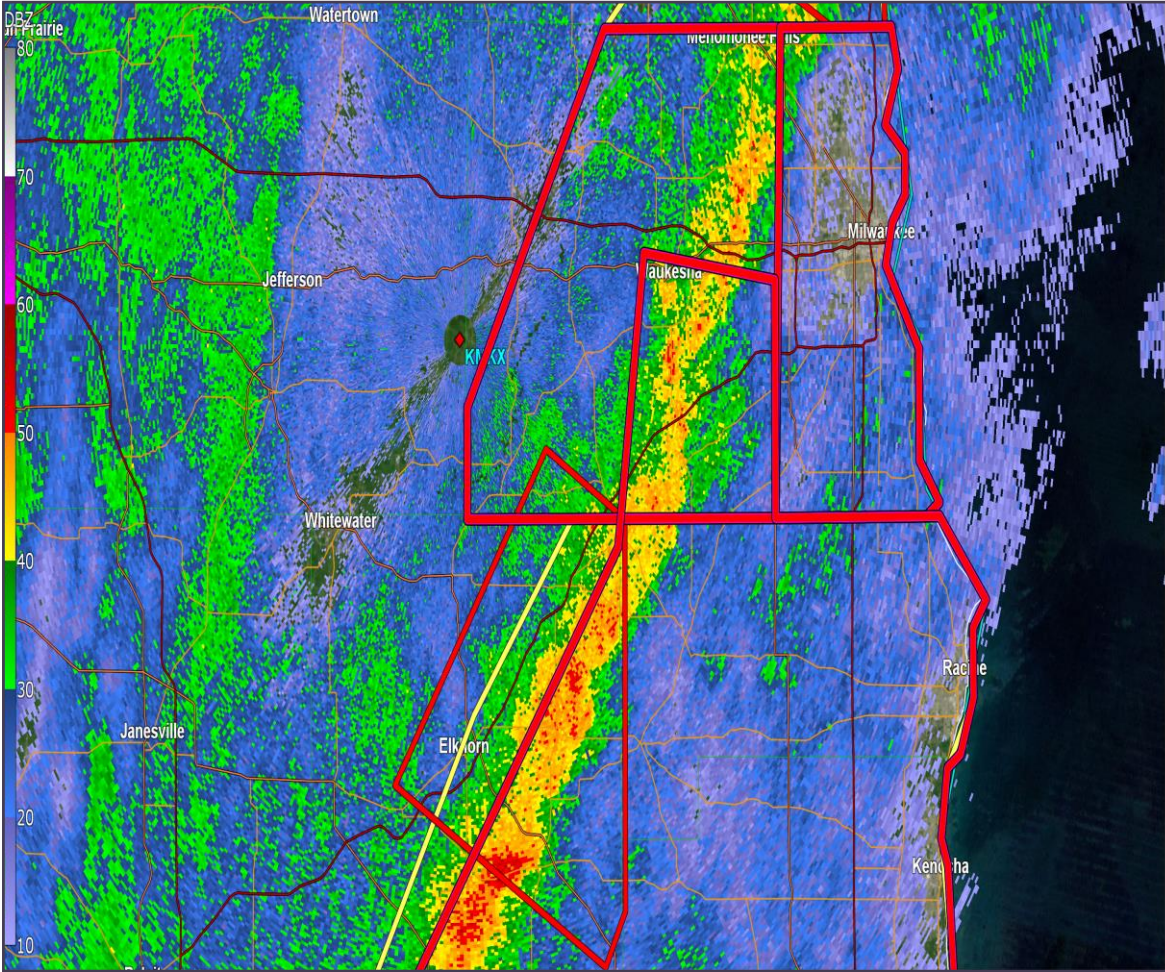
IMPACT...Flying debris will be dangerous to those caught without shelter. Mobile homes will be damaged or destroyed. Damage to roofs, windows, and vehicles will occur. Tree damage is likely.

* Locations impacted include...
Kenosha, Racine, Waukesha, New Berlin, Mount Pleasant, Muskego, Pleasant Prairie, Lake Geneva, Sturtevant, Union Grove, Paddock Lake, Williams Bay, Camp Lake, Wind Lake, Vernon, Twin Lakes, Rochester, Raymond, Wheatland and Yorkville.



12:13pm

October 12, 2022



Site: KMKX - MRLE_3
VST: 10/12/2022 17:10:25 Z
Prod: 10/12/2022 17:13:39 Z
VCP: 212 SMV: ----
Tilt: 0.485°

Select Product:

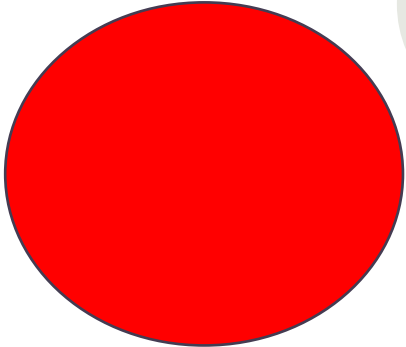
- BR
- VIL
- ZDR
- BV
- VILD
- CC
- SRV
- PQSH
- PHI
- SW
- MEHS
- KDP
- ET
- INROT
- HCA

Select Tilt:

<input type="radio"/> 0.5°	<input type="radio"/> 0.9°	<input type="radio"/> 1.3°	<input type="radio"/> 1.8°
<input type="radio"/> 2.4°	<input type="radio"/> 3.1°	<input type="radio"/> 4.0°	<input type="radio"/> 5.1°
<input type="radio"/> 6.4°	<input type="radio"/> 8.0°	<input type="radio"/> 10.0°	<input type="radio"/> 12.5°
<input type="radio"/> 15.6°	<input type="radio"/> 19.5°		

Product Details:

Max: 58.0 dbz
Az: 172.3°
Ran: 21.7 nm



12:13pm



Panel Questions:

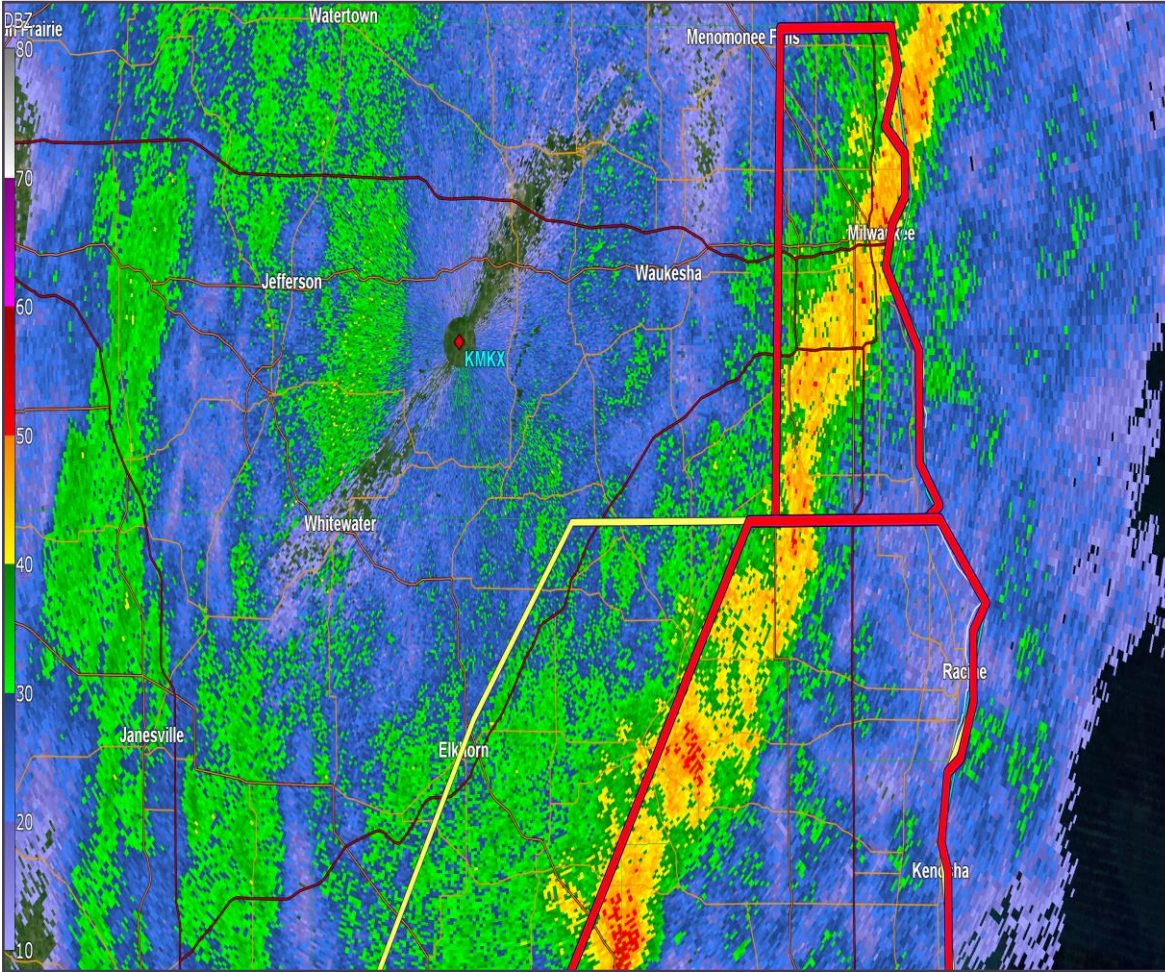
- At 12:13pm, all properties in all 4 school districts remain under a tornado warnings.

- How was everyone with shelter in place?

12:13pm

- Andy and Greg, you have a few campuses now around 45 minutes in shelter. How was that?
-

October 12, 2022



Site: KMKX - MRLE_3
VST: 10/12/2022 17:30:48 Z
Prod: 10/12/2022 17:30:48 Z
VCP: 212 SMV: ----
Tilt: 0.527°

Select Product:

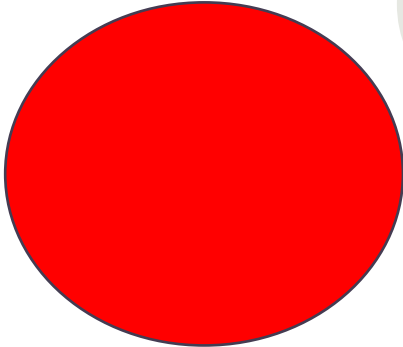
- BR
- VIL
- ZDR
- BV
- VLD
- CC
- SRV
- PQSH
- PHI
- SW
- MEHS
- KDP
- ET
- NROT
- HCA

Select Tilt:

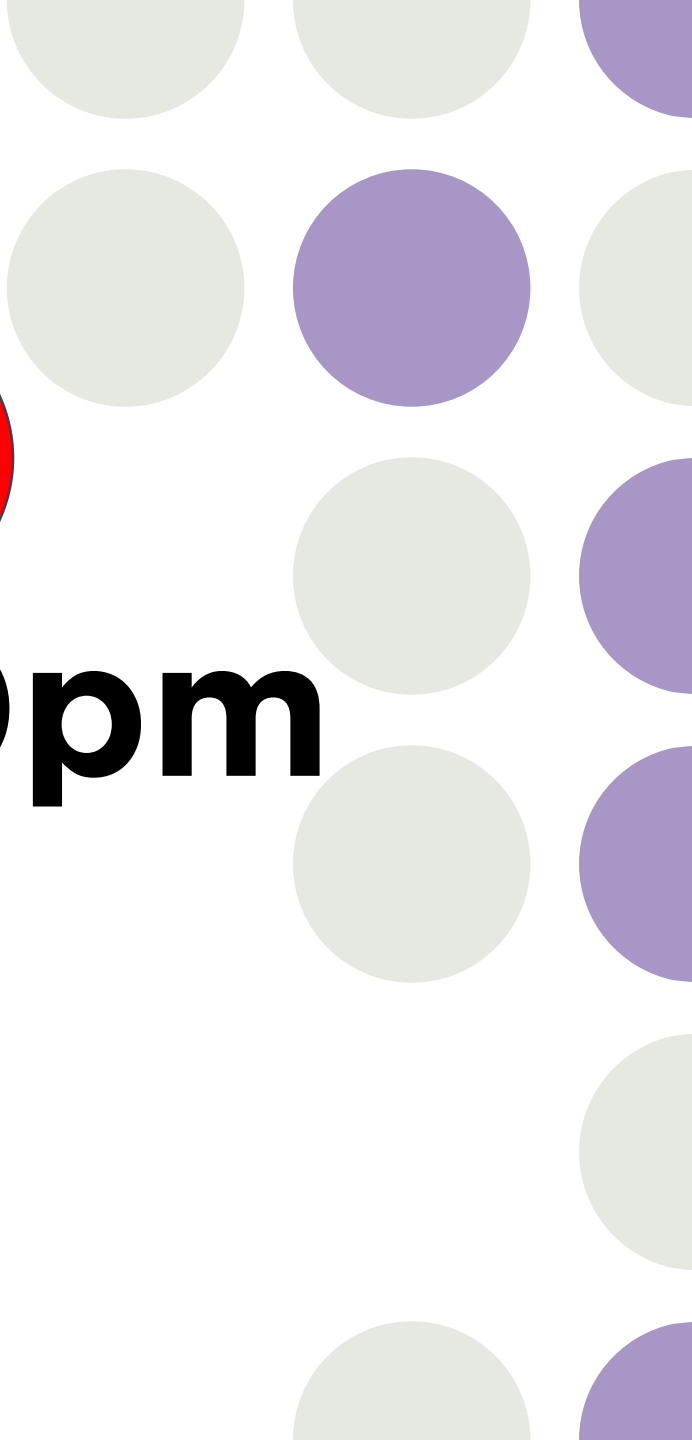
0.5°	0.9°	1.3°	1.8°
2.4°	3.1°	4.0°	5.1°
6.4°	8.0°	10.0°	12.5°
15.6°	19.5°		

Product Details:

Max: 54.5 dbz
Az: 157.8°
Ran: 27.0 nm



12:30pm

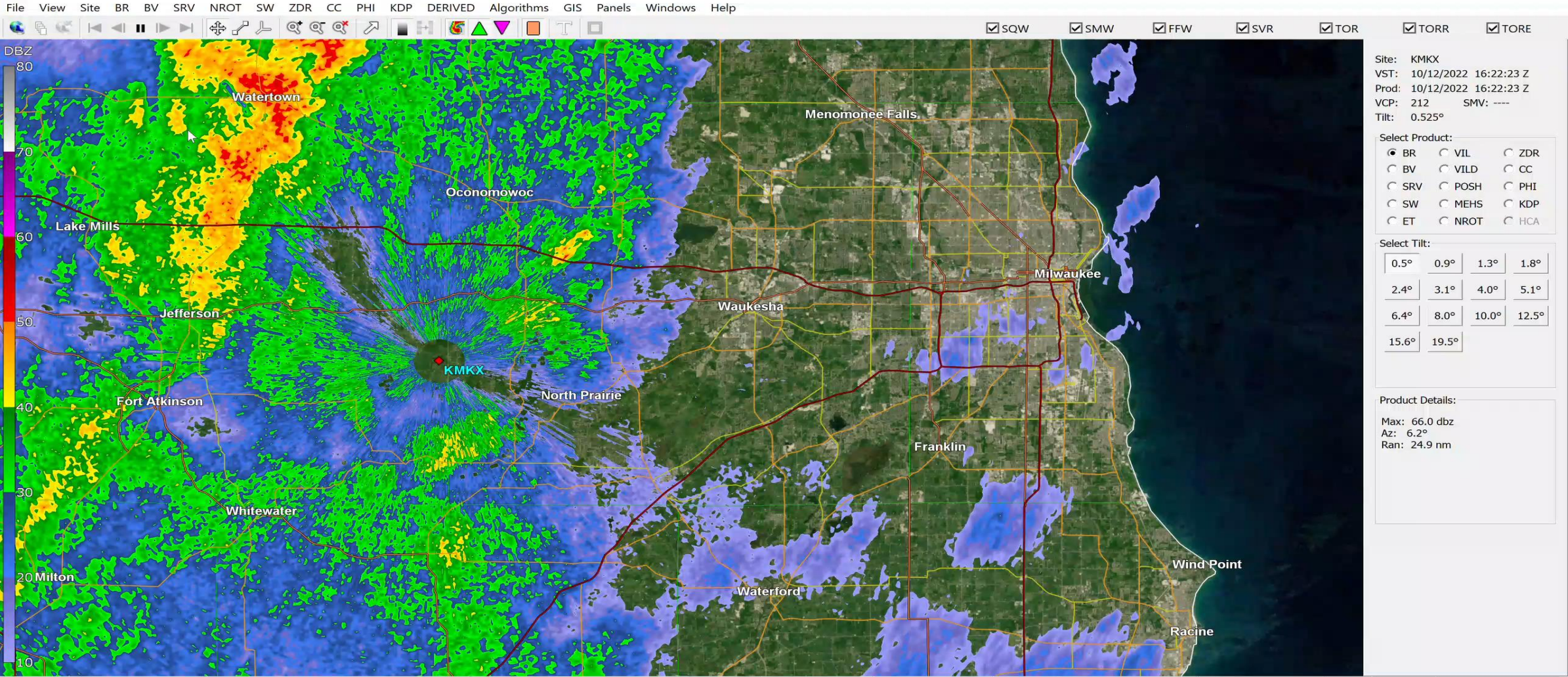


Panel Questions:

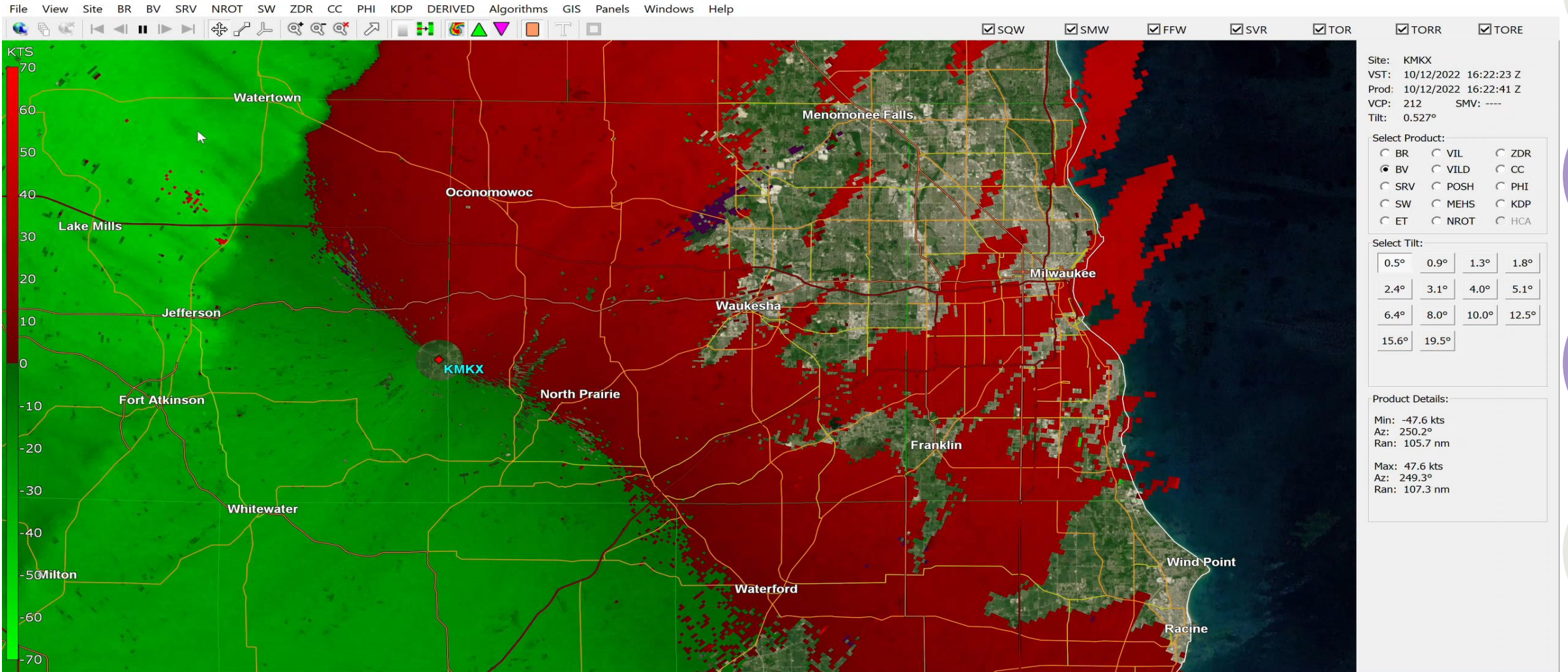
- At 12:30pm, all tornado warnings expired for your school districts.
 - Did you experience issues with releasing students and staff from shelters?
 - Did any of you have some schools out of the warnings before other schools in your district?
-

12:30pm

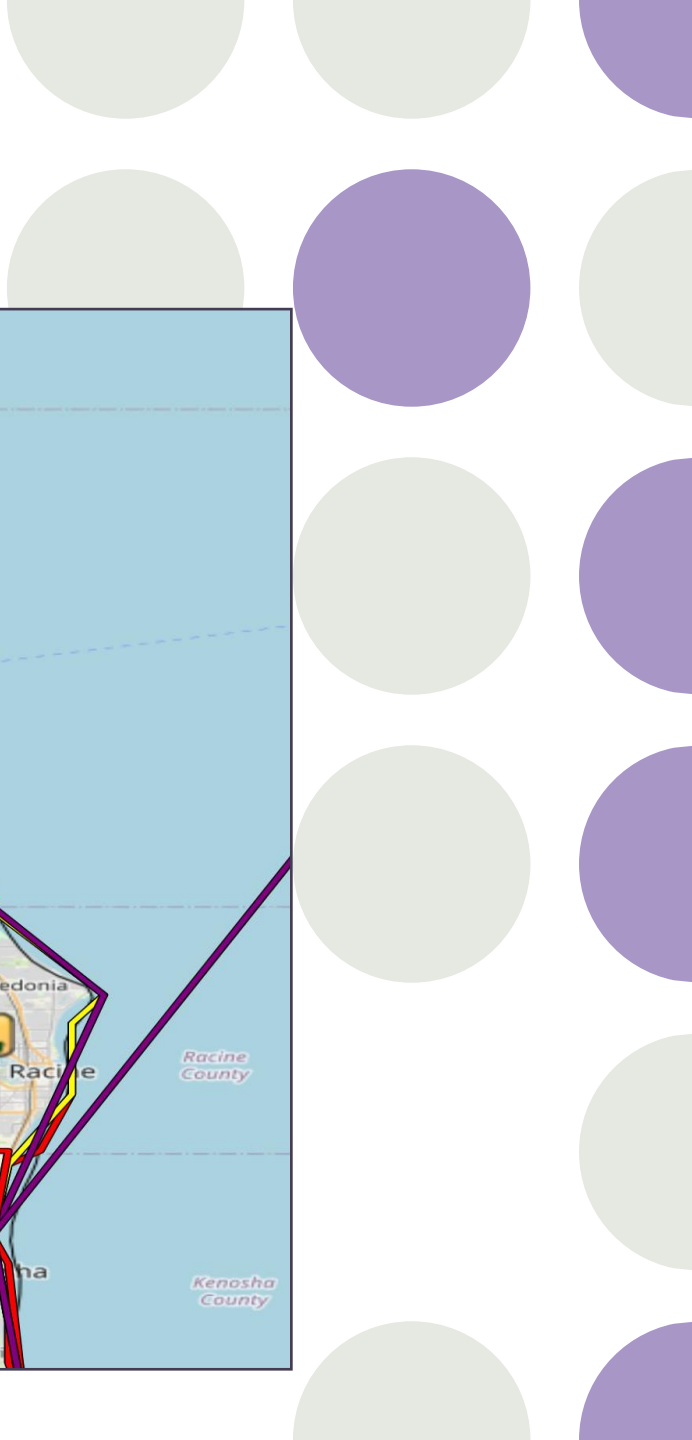
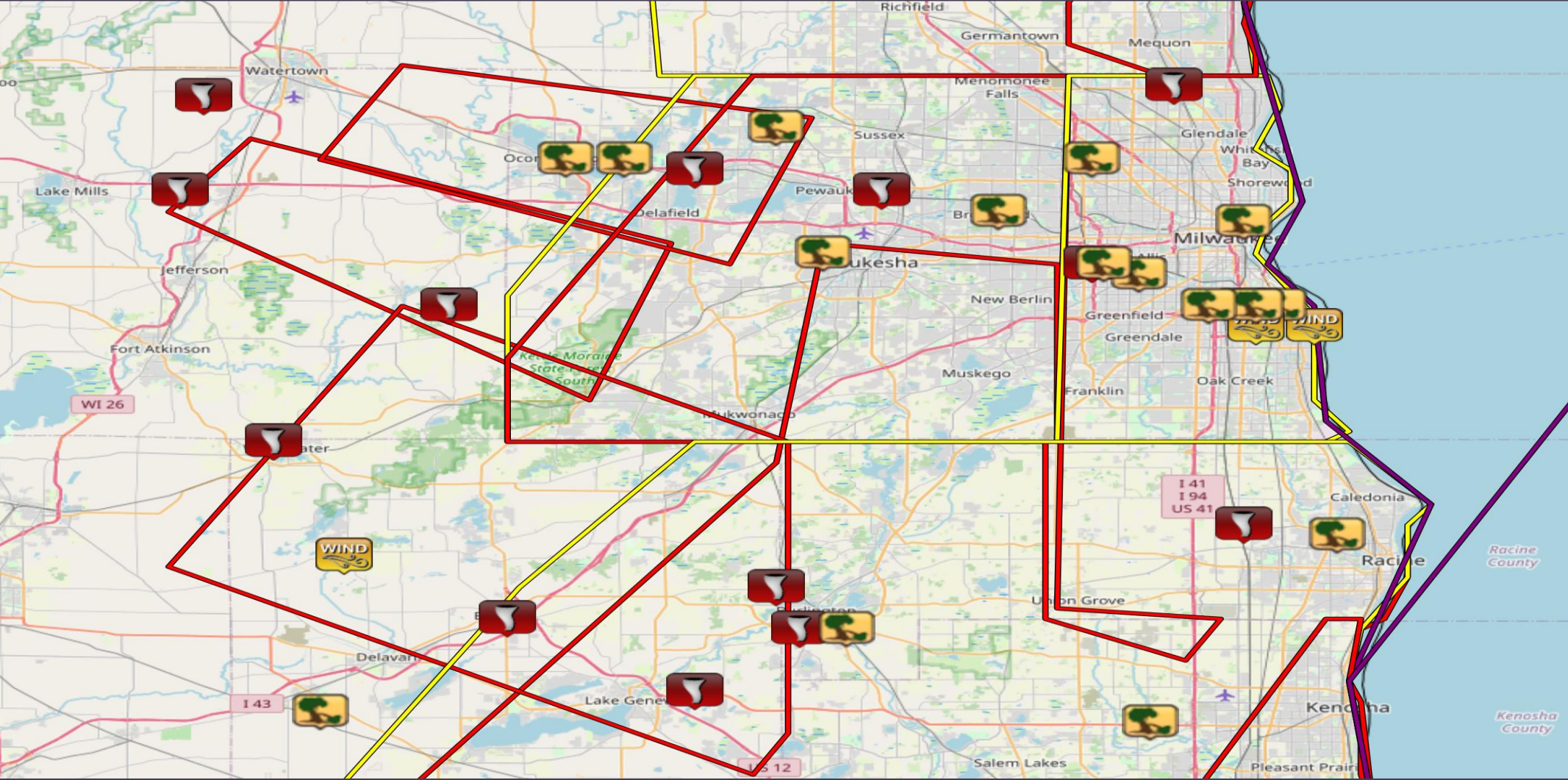
October 12, 2022 Radar Loop



October 12, 2022 Radar Loop



October 12, 2022



October 12, 2022 Summary:

- On day with 0% chance of tornadoes
 - 8 Tornado Warnings in 7 counties
 - Short duration: 11:27am through 12:57pm
 - 7 confirmed tornadoes in 5 counties
 - Non tornadic wind damage in 6 counties
 - Panel: share some successes. Share some pain points/ revisions. How different was this from a drill?
 - Final thoughts/ Q&A
-

From Teaching to Tornadoes

Panel Discussion on How
School Districts Handled
the October 12, 2022
Tornadoes

