



## Geographic Information Systems and Building Mapping for Trades, and Emergency Personnel

Steve Hibbard



Jon Zickermann



Concordia University Mequon, WI

1

# Our Experience Confirms That GIS Allows Data To Be

- \*Centralized
- \*Sharable
- \*Accessible

2

## Why Do We Believe That GIS Is The *Basis Of Shared Data*:

1. Flexible
  1. GIS Is A Combined Virtual Central File Cabinet To Coordinate All Your Data
  2. Allows For Links To Web Based Work Order Systems
  3. Provide Insights For Informed Decisions
2. Web Based
  1. Define who sees what data.
  2. Live Updates
  3. Great for new staff in all departments
  4. Available to multiple users inside and outside the organization
  5. Effective tool for our successors!

3

## Workflow

- Gather Data
  - Start Small—floor Plans
    - AutoCAD
    - Blueprints
    - Field Measuring
      - **(THIS ONE TAKES TIME!)**
      - Our initial collection/drawing: 1 year....~500 hours
        - **Faster now**--ACAD imports
  - After Collection Of Basic data
    - <50 Hrs./year
      - Probably less!
  - No GIS Staff?
    - Civil Engineering/GIS Firms
    - **REMEMBER--The work can be done remotely...**



4

## Who Uses CUW Data:

- Maintenance
- Contractors
- Event Planning
- Room/Space Assignment Coordinator
- Campus Police
- City Of Mequon Police/Fire Departments
- Ozaukee County Sheriff's Department
- Ozaukee County Emergency Government



5



## Maintenance/Contractors

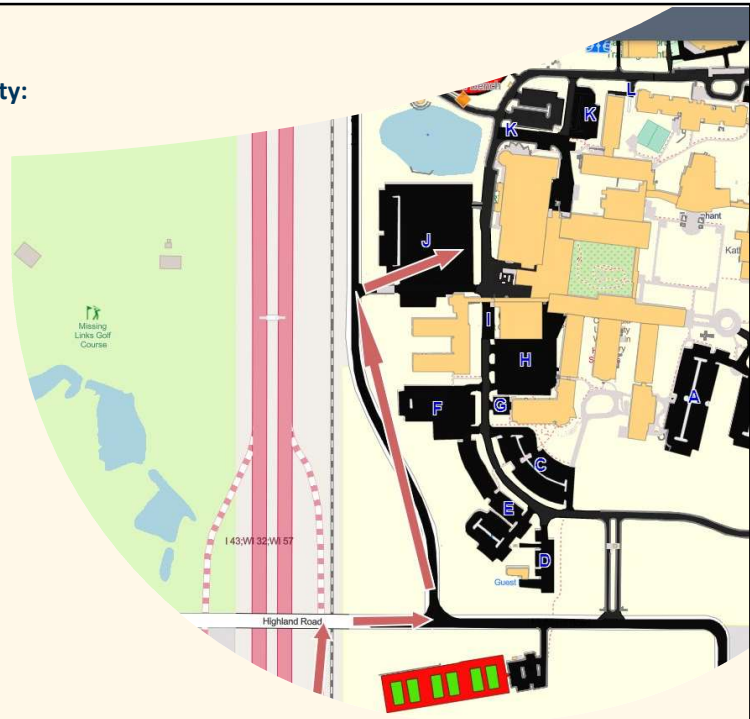
- Our Uses:
  1. Electrical panels, locate panel locations on GIS/ability to open and read what is in the panel without hunting physically.
  2. Locate private utilities
  3. HVAC data
  4. Office locations room sizes.
- Contractors:
  1. MEPs'
  2. Private Line Locaters
  3. Event Companies, tents, inflatables
  4. Roofing

6

## Examples Of How Our Maps Are Used By Safety:

### As The System Provides Scaled Drawings:

- Fire Department:
  - Locate Entrances
  - Locate Knox Boxes
  - Locate Hose Connections
  - Room Locations
- Police/Sheriff/Emergency Government:
  - Locate Entrances
  - Plan Emergency Simulations
    - Used in Active Shooter Simulation This Summer
    - Used Exterior Outlet Locations For Staging



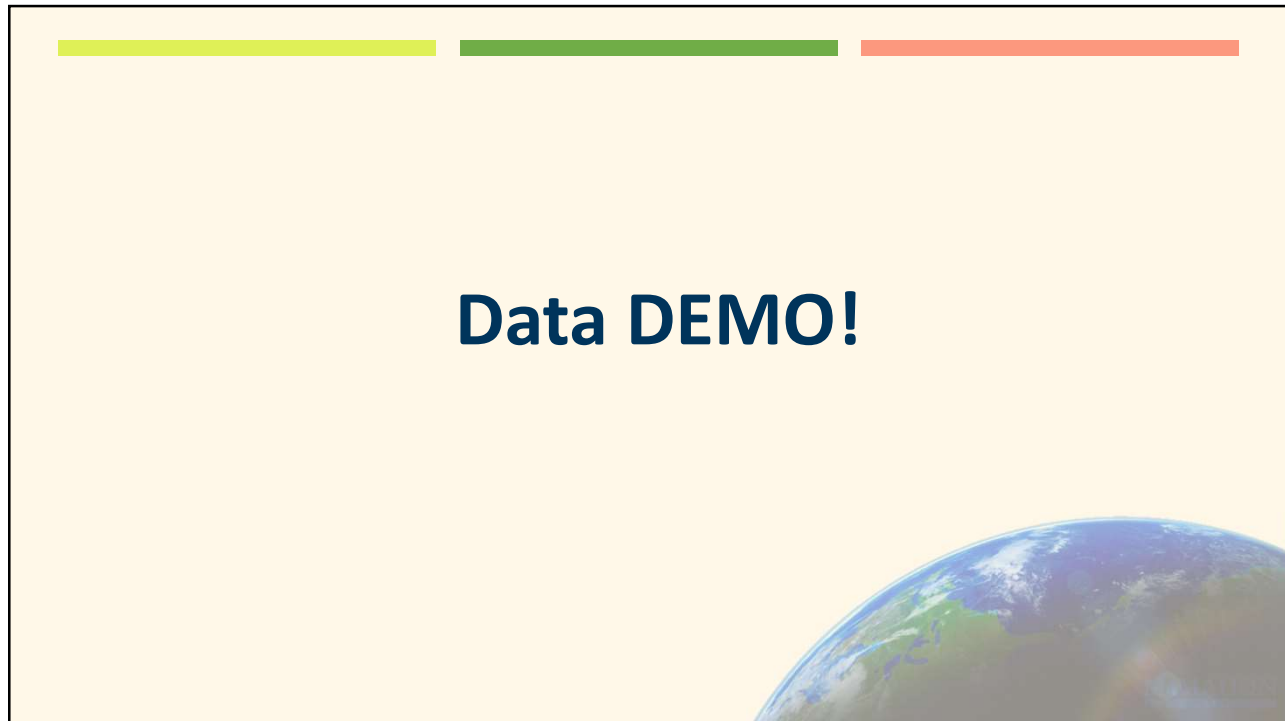
7

## Summary

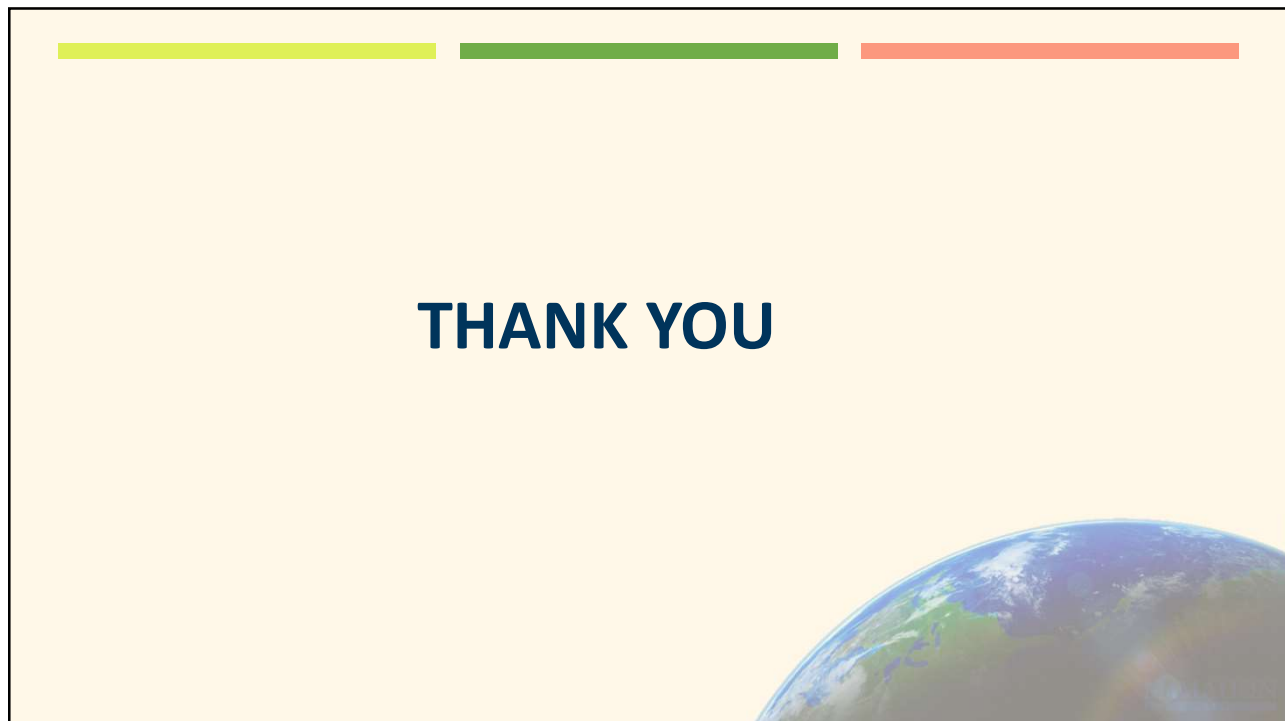
- We have found that GIS technology is improving access to data
  - Used By Outside Groups
    - *Access is defined by CUW*
  - Manage information in one central location
    - Allows Organizations to Familiarize Themselves To CUW Site
    - Enhances:
      - Safety
        - Local Emergency Organizations
      - Site Planning and Projects
        - Maps Are 'As-Built'
          - Scaled
          - Reduces Need To Release Blueprints



8



9



10